

Single Leaf EI₂₃₀ / T30 Fire Retardant Security Door

Fire Protection	EI₂₃₀ / T30	tested acc. to EN 1634-1
Smoke Control (optional)	S_a, S₂₀₀ / RS	tested acc. to EN 1634-3
Self-Closing (optional)	up to C5	tested acc. to EN 1191
Burglar Protection	RC4	tested acc. to EN 1627

Certified in accordance with DIN EN 16034 / 14351-1 / 13241

General Building Approval as T30-1 (-RS) -FSA acc. to DIN 4102-5 / DIN 18095

Optional Audited Additional Functions

- Smoke Control	RS (S₂₀₀)	tested acc. to EN 1634-3
- Sound Insulation	up to R_{w,P} 46dB	tested acc. to EN ISO 10140-2
- Bullet Resistance	FB4/FB6	tested acc. to EN 1522
- Air Tight	up to class 4	tested acc. to EN 1026
- Rain- and Fire-Water Tight	class 6A	tested acc. to EN 1027
- Wind load Resistance	up to class C5	tested acc. to EN 1221
- Blast Resistance	up to 20 kPa	tested acc. to EN 13124-1
- Explosion Protection	up to zone 1/21	acc. to EN 1127-1 or ATEX 2014/34/EU
- Stainless Steel		

Range of Dimension

Range of Dimension for Doors **Width** from 625 mm to 1500 mm
Height from 1750 mm to 3000 mm

Range of Dimension for Hatches **Width** from 625 mm to 750 mm
Height from 500 mm to 1750 mm

Technical Specification and Tender Text

Product:	EI₂₃₀ / T30 single leaf fire retardant security door brand Buchele tested acc. to EN 1634-1 and EN 1627
Door Type:	PLANE Line PL 301 BASIC
Resistance Class:	RC 4
Structural Opening: x mm
Door Leaf:	Double-walled, planar 70 mm thick steel door leaf without hinge embossing, three sides rebated with thick rebate. Without bottom stop. Special insulating inserts fully laid-in and glued. Securing pin screwed in door leaf rebate.
Threshold:	Floor bracket as separation sill. Surface galvanized and welded to the frame.
Frame:	3-sided circumferential rebated corner frame with visible black coated intumescent material in rebate. High-quality multi chamber sealing profile adjustable fixed in the three-sided groove.
Hinges:	Three-part, height adjustable construction hinges with hinge pin retention and ball bearing spacer ring for smooth door movement.

Door Closer:	Door closer system with standard arm acc. to EN 1154 silver coloured mounted on hinge side.
Fitting:	2-point security mortise lock with latch lever function acc. to EN 12209 (prepared for installation of a profile cylinder lock, provided by customer). Security door handle set in acc. to EN 18257 fixed pivoted, stainless steel, in U-shape with rounded long-plate.
Surface:	Door leaf and frame galvanized und primed with 2K-PUR primer (Very High Solid) similar RAL 7035.
Installation:	masonry ≥ 240 mm concrete ≥ 140 mm

Alternative: PLANE Line PL 301 PREMIUM with flush mounted optics

Frame:	3-sided circumferential rebated PLANE Line special corner frame for flush mounted optics on hinge side. With visible, black coated intumescent material in rebate. High-quality multi-chamber sealing profile adjustable fixed in the three-sided groove.
Hinges:	Object hinges type VB-3D 160 adjustable in three dimensions. Fixture element with slide bearings inside for smooth door movement.
Door Closer:	Slide rail door closer system acc. to EN 1154 silver coloured mounted on hinge side.

Alternative: PLANE Line PL 301 SUPERIOR with flush mounted optics

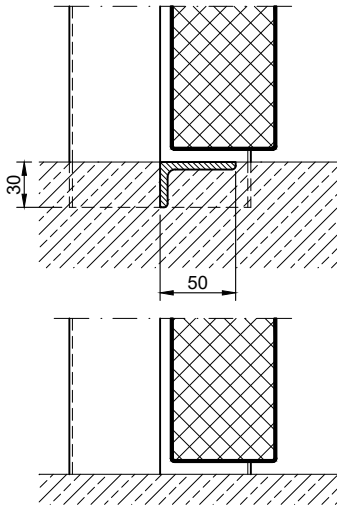
Frame:	3-sided circumferential rebated PLANE Line special corner frame for flush mounted optics on hinge side. With visible, black coated intumescent material in rebate. High-quality multi-chamber sealing profile adjustable fixed in the three-sided groove.
Hinges:	Concealed hinge system adjustable in three dimensions.
Door Closer:	Concealed slide rail door closer system acc. to EN 1154 integrated in frame and door leaf.

Supplementary Equipment

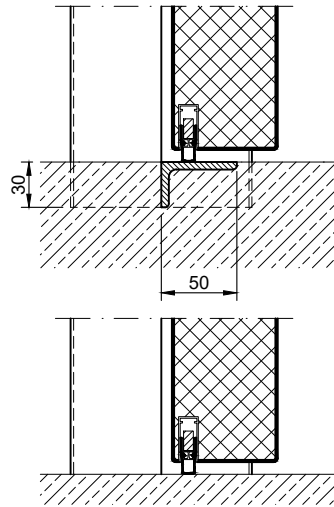
Glazing:	F30 fire-protective glazing fixed with profiled and visible screwed steel glazing bars. Minimum border 125 mm on side and top, base 300 mm.
Stainless Steel:	Material 1.4301 (V2A) or 1.4404 (V4A), Surface mill finish or brushed.
BUCHELE DELUXE:	The exclusive surface coating.

Thresholds

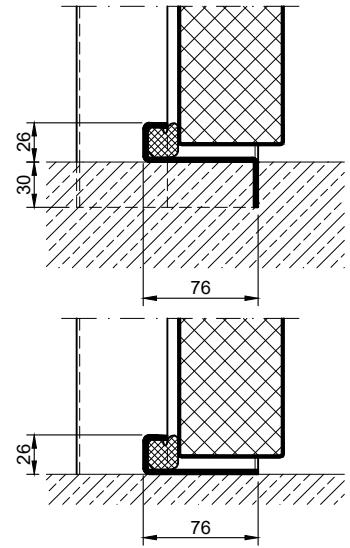
separation sill



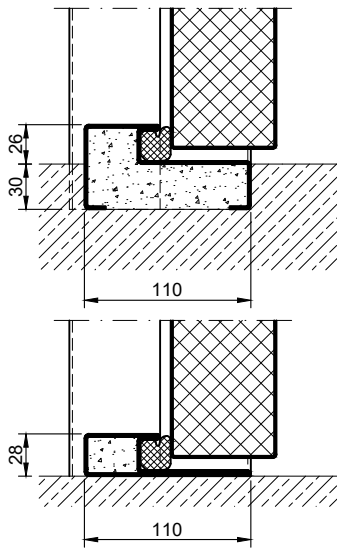
drop seal



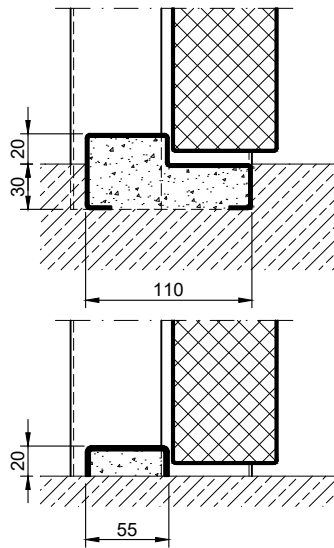
stop sill with seal



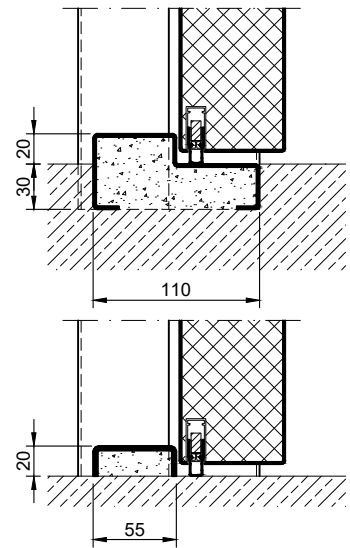
stop sill with seal



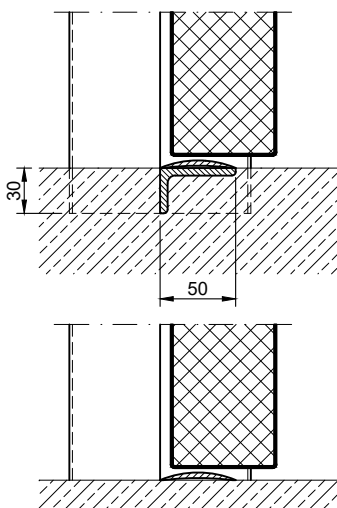
stop sill without seal



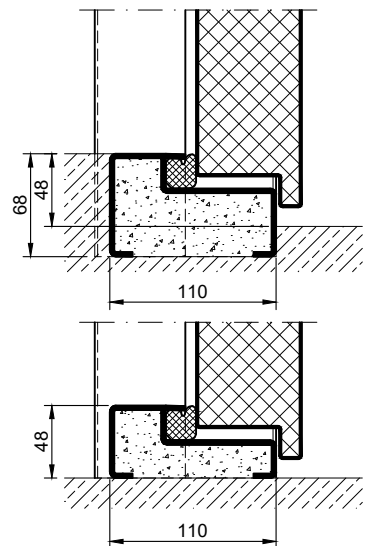
stop sill with drop seal



Trennschiene mit Halbrundschwelle

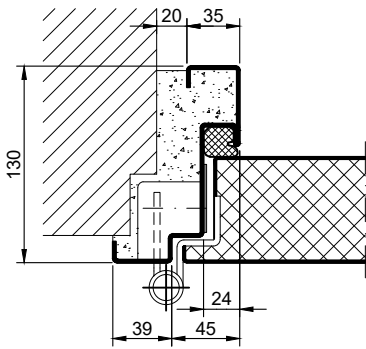


full sill

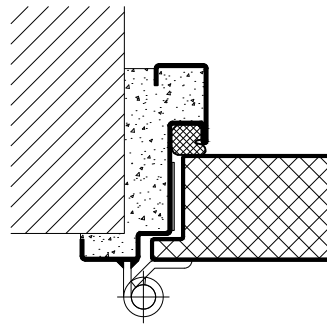


PREMIUM - Version

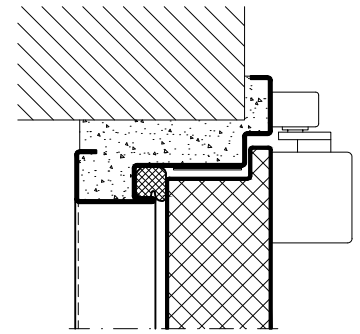
object hinges VB-3D



construction hinges

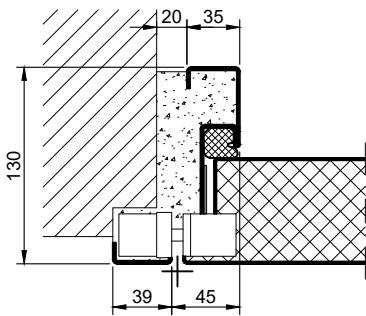


slide rail door closer

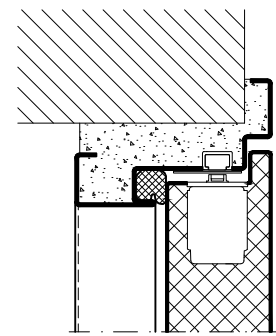


SUPERIOR - Version

concealed hinges

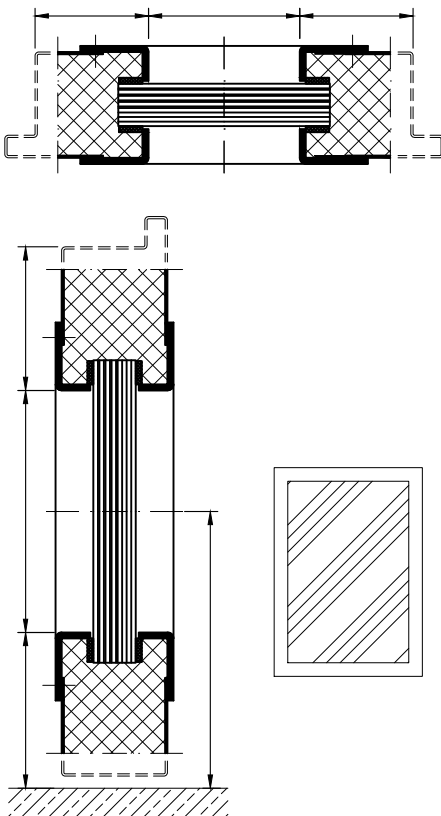


integrated door closer

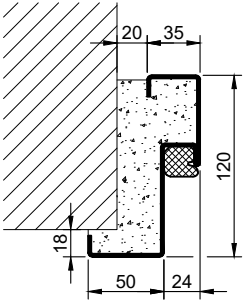
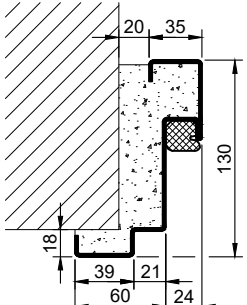
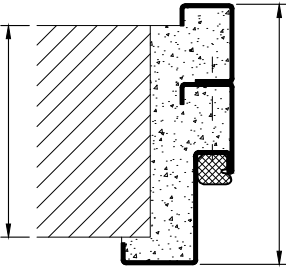
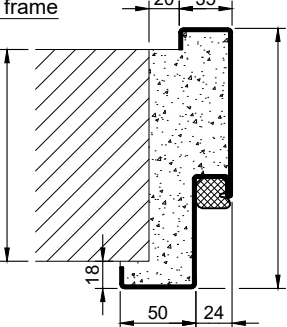
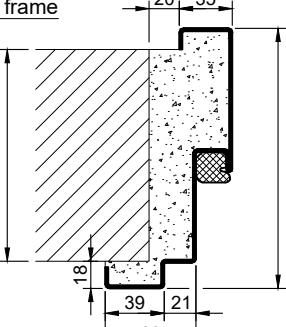
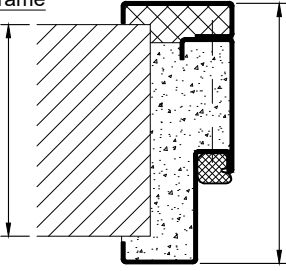
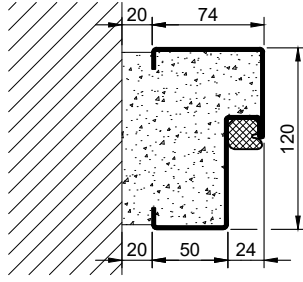

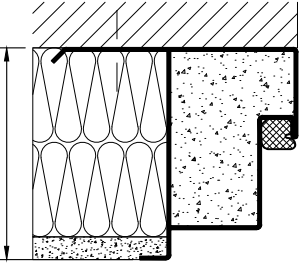
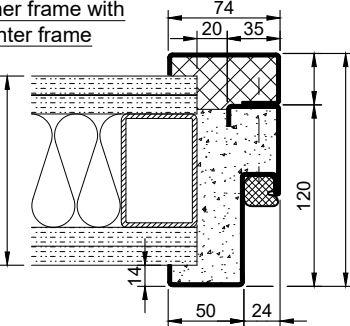
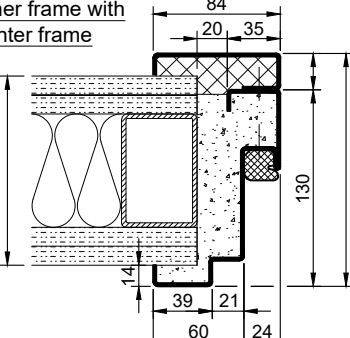
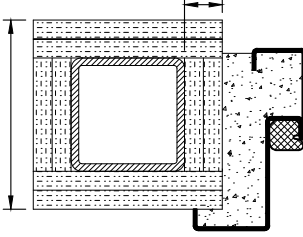
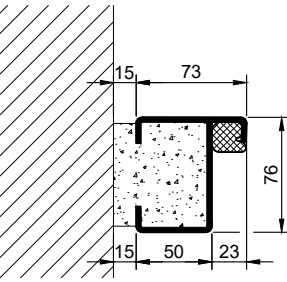
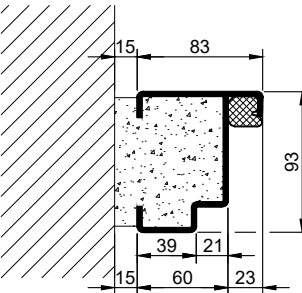
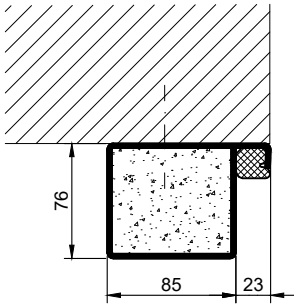


Options

glazing



1.2.3_PLANE LINE PL 301 RC4_EN

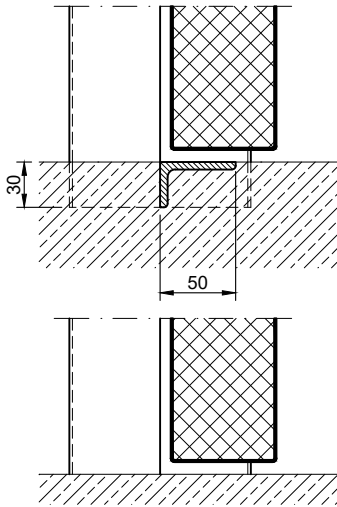
Frames BASIC	Frames PREMIUM/SUPERIOR	Variants (illustration BASIC)
<p>corner frame</p> 	<p>corner frame</p> 	<p>corner frame with additional frame</p> 
<p>encasing frame</p> 	<p>encasing frame</p> 	<p>encasing frame with counter frame</p> 
<p>block frame</p> 	<p>block frame</p> 	<p>juttet block frame</p> 
<p>corner frame with counter frame</p> 	<p>corner frame with counter frame</p> 	<p>corner frame at support / pillar</p> 
<p>profile block frame</p> 	<p>profile block frame</p> 	<p>pre-wall frame</p> 

1.2.3. PLANE LINE PL 301 RC4_EN

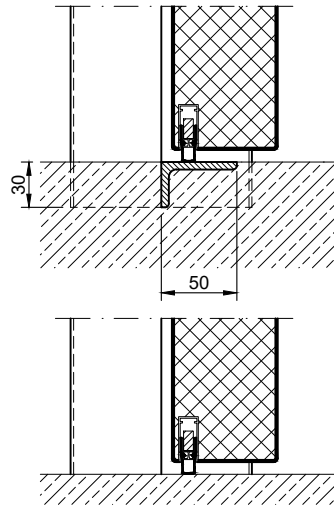
technical modifications reserved - edition 03/2024

Thresholds

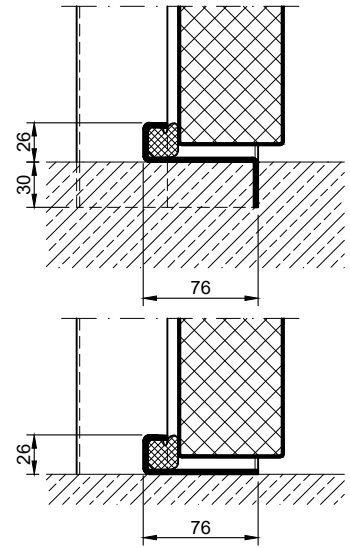
separation sill



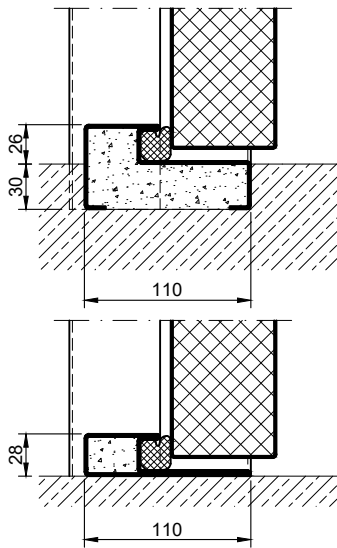
drop seal



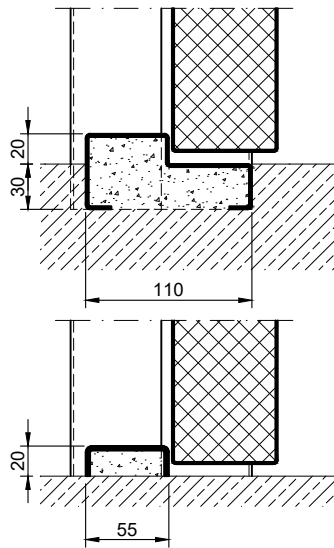
stop sill with seal



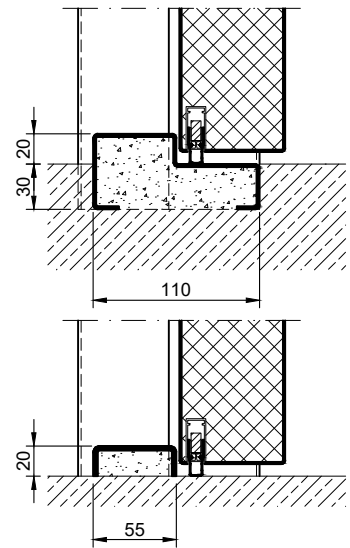
stop sill with seal



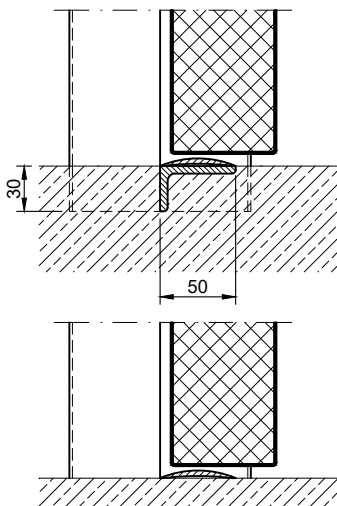
stop sill without seal



stop sill with drop seal



Trennschiene mit Halbrundschwelle



full sill

